



Main datas

Builder : CHUNG HWA

Year : 1981

Length : 12,74

Draft minimum : 1,27

Hull : Monohull

Area : Spain Denia

Berth details :

Flag : Spain

Subtype :

Architect :

Material : GRP

Beam : 4,14

keel : Unknown

Life Raft : Yes

Mooring : Yes

Leasing in progress : No

Engines

Model : 3208

Montage : In Board (IB)

Power Unit. (CV) : 375

Hours : 1050

Fuel capacity : 2400

Brand : CATERPILLAR

Fuel : Diesel

Engine(s) : 2

Comments : Engines changed in 1991, but boat launched in 1993. Very little used since.

Shaft : Shaft drive

Facilities

Sailor Cabin : 0

WC : Sailor

Helm : Yes

Double Cabin : 2

Head : 2

Berth : 5

Flybridge : Yes

Electronics

Radar details : RAYMARINE

Pilot details : RAYMARINE 5272

Sounder details : Navman

GPS details : Plotter RAYMARINE C 90 W

Plotter details : Furuno

Converter 12/220 : Yes

Watermaker details :

Radar : Yes

Autopilot : Yes

Sounder : Yes

GPS : Yes

Chartplotter : No

VHF : Yes

Watermaker : No

Bridge equipment

Hydraulic Gangway : No

Bath platform : Yes

Winter cover : Yes

Sprayhood : No

Furling mainsail : No

Sails details :

Gangway : Yes

Davits : Yes

Electric windlass : Yes

Cockpit awning : Yes

Teak deck : Yes

Spinnaker : No

Major equipment

Stern thruster : No

Group and thruster details : Kohler Group 180 hours of operation. Engine OK.

Charger and AC details : Reversible rear cabin air conditioning

Black Water : No

Tender : No

Details :

Bow Thruster : No

Marine Gen. : Yes

AC : Yes

Hot water : Yes

Flaps : Yes

Tender Engine : No

Appliances

Freezer : Yes

Microwaves : Yes

Electric stove : No

Heating details : Reversible cold-hot air conditioning

Dishwasher : No

TV : Yes

IceMaker : No

Oven : Yes

Gas stove : Yes

Heater : Yes

Washing machine : No

TV antenna : Yes

SAT-TV : No

Divers

Comments : Boat very little used, but regular maintenance. New AR platform.









































































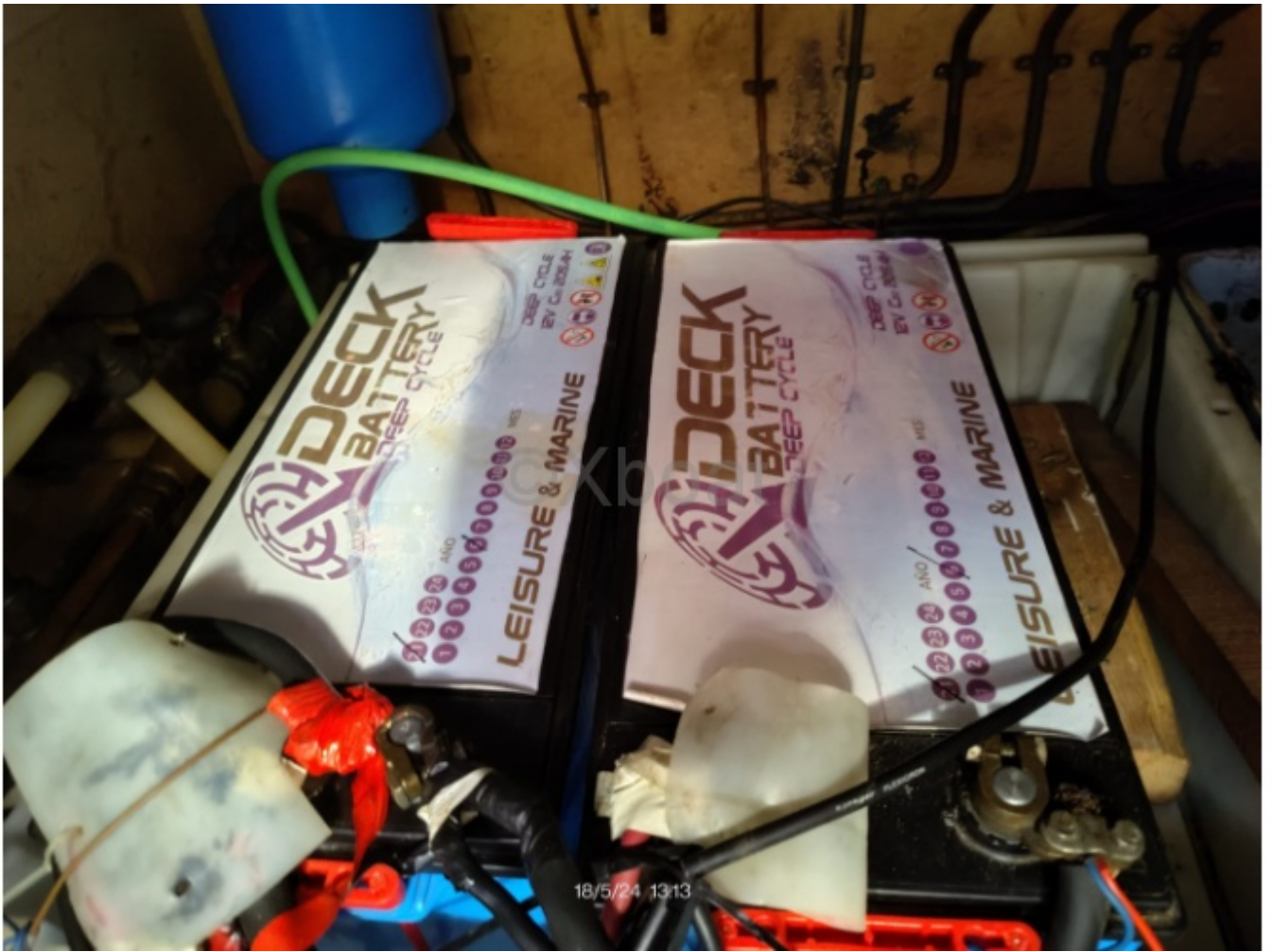












18/5/24 13:13



