



## Main datas

Builder : ST Boats  
Year : 2007  
Length : 10,74  
Draft minimum : 0,70  
Hull : Monohull  
Area : France Channel  
Berth details :  
Flag : France

Subtype :  
Architect : Garroni / Musio  
Material : GRP  
Beam : 3,68  
keel : Fixed Keel  
Life Raft : No  
Mooring : Yes  
Leasing in progress : No

## Engines

Model : 6BY  
Montage : In Board (IB)  
Power Unit. (CV) : 260  
Hours : 830  
Fuel capacity : 800

Brand : YANMAR  
Fuel : Diesel  
Engine(s) : 2

Owner's Comments : ENGINES:YANMAR2 x 260 HP6BY 260 modelshaft line transmission830 hours of use3-blade propeller + rope cutterSIDE POWER bow thruster (installed in 2017)2 Lenco electric flaps800 liter diesel fuel capacity (2 x 400 l)approximate consumption at cruise, i.e. 45 l/h on both enginesmaximum speed approximately 27/28 knotsengine information displayed directly on the GARMIN plotter screenMaintenance by professionals onlyinvoice fileUp to date

maintenance(drains, filters, anodes, exchanger  
cleaning carried out in July 2023)

Drive : Shaft drive

## Facilities

Sailor Cabin : 0

WC : Sailor

Helm : Yes

Double Cabin : 2

Head : 1

Berth : 6

Flybridge : Yes

---

## Electronics

Radar details : GARMIN radar (installed in 2019)

Pilot details : RAYMARINE autopilot + plotter compatible (route tracking on plotter)

Sounder details : GARMIN fishfinder

GPS details : GARMIN GPSMAP 1222 Touch,GPS - PLOTTER - SOUNDER

Plotter details : GARMIN GPSMAP 1222 Touch, touchscreen (installed in 2019)VHF RO 4700 + portable VHF

Converter 12/220 : No

Watermaker details :

Radar : Yes

Autopilot : Yes

Sounder : Yes

GPS : Yes

Chartplotter : Yes

VHF : Yes

Watermaker : No

---

## Bridge equipment

Hydrolic Gangway : No

Bath platform : Yes

Winter cover : No

Sprayhood : No

Furling mainsail : No

Sails details :

Gangway : No

Davits : No

Electric windlass : Yes

Cockpit awning : Yes

Teak deck : No

Spinnaker : No

---

## Major equipment

Stern thruster : No

Group and thruster details : - SIDE POWER bow thruster (installed in 2017)

Charger and AC details :

Black Water : Yes

Tender : Yes

Details :

Bow Thruster : Yes

Marine Gen. : No

AC : No

Hot water : Yes

Flaps : Yes

Tender Engine : Yes

# Appliances

Freezer : No

Microwaves : Yes

Electric stove : No

Heating details :

Dishwasher : No

TV : Yes

IceMaker : No

Oven : No

Gas stove : Yes

Heater : No

Washing machine : No

TV antenna : No

SAT-TV : No

---

## Owner's Comments

**ST BOATS 34 CRUISER FLY**

Year of construction: 2007

1st commissioning: 2008

Overall length: 10.74 m

width: 3.68 m

minimum draft: 0.70 m

maximum air draft: 3.60 m

air draft for transport: 4.10 m

headroom of 1.87 m

loaded weight approximately 7500 KG

Design category C.E - B - 10 PEOPLE MAX

### FACILITIES:

2 cabins

1 bathroom with shower cabin

WC with black water + grinder

bright square with white/cream cushion in good condition (protected by covers since 2008)

saloon convertible into a 2-seater bed

6 beds in total

light wood tables with bottle rack

kitchen area on the right

stainless steel sink with mixer

cold/hot water under pressure (hot water tank replaced in 2022)

2 gas burner hob

microwave (220 V)

fridge

### ELECTRONICS / NAVIGATION:

interior wheelhouse with steering position + flywheel steering

large pilot seat

ice towels

hydraulic bar

navigation tools (compass, rudder angle, depth sounder)

GARMIN radar (installed in 2019)

RAYMARINE autopilot option + plotter compatible (route tracking on plotter)

GPS, plotter, radar, engine information: GARMIN GPSMAP 1222 Touch, touchscreen (installed in 2019)

Fixed VHF RADIO OCEAN RO4700 (ASN)

portable VHF  
CD Radio

**ELECTRICITY / ENERGY:**

shore power  
battery charger  
3 batteries including 2 X 180 AH  
differential circuit breaker  
switchboard  
220 V sockets  
12V sockets

**ENGINES:**

YANMAR  
2 x 260 HP  
6BY 260 models  
shaft line transmission  
830 hours of use  
3-blade propeller + rope cutter  
SIDE POWER bow thruster (installed in 2017)  
2 Lenco electric flaps  
800 liter diesel fuel capacity (2 x 400 l)  
approximate consumption at cruise, i.e. 45 l/h on both engines  
maximum speed approximately 27/28 knots  
engine information displayed directly on the GARMIN plotter screen  
Maintenance by professionals only  
invoice file  
Up to date maintenance  
(drains, filters, anodes, exchanger cleaning carried out in July 2023)

**EQUIPMENT:**

flybridge with steering position  
complete closed rear cockpit cover (new 2023)  
windshield cover  
electric windlass with anchor + chain  
rear platform with bench seat + cushions + storage boxes (installed by owner)  
teak slatted bathing platform + bathing ladder  
electric bilge pump  
manual bilge pump  
outdoor shower  
fire extinguishers

Predictable  
life raft to be replaced

**1ST HAND**

Seriously maintained boat, ready to sail!  
VAT PAID STATUS (in EU)

---

**Original availability :** XBOAT presents the details of the boat as supplied to us by the owner.

Owners may make errors or changes without notifying us. This information is not contractual and does not bind XBOAT in any way. It cannot be opposed by a visitor or a buyer.

Additional information on request via the contact form specifying your contact details







































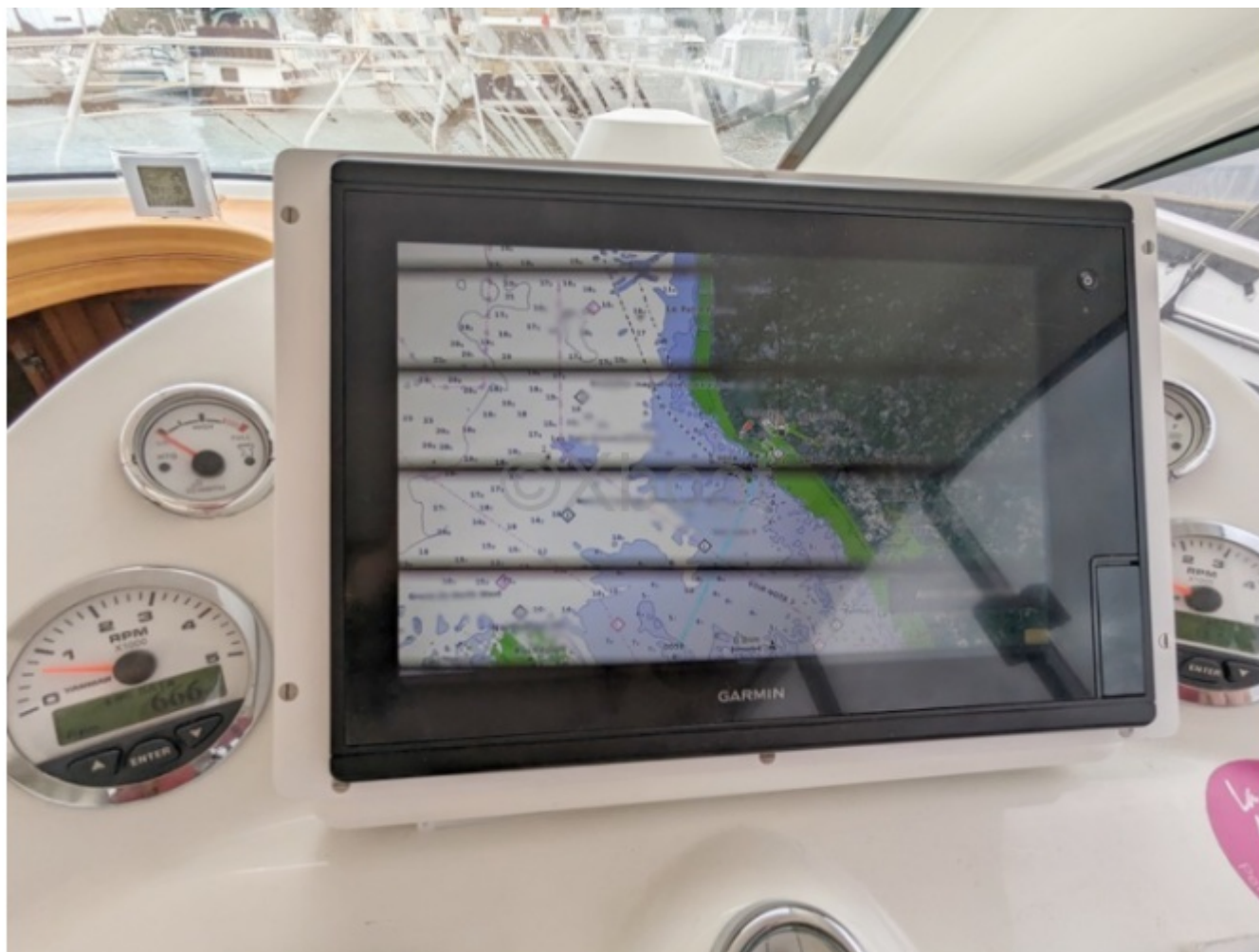






















































































# 34 CRUISER

## CARACTÉRISTIQUES

Longueur Hors Tout	10,74 m
Bau maxi	3,68 m
Tirant d'eau	0,80 m
*Déplacement	7,85 T
Catégorie	B
Motivisation Diesel (Transmission ligne d'arbre) 2 x 230 HP a 2 x 315 HP	
Capacité gasoil	2 x 400 L
Capacité d'eau	215 L
Hauteur sous barrotis maxi	2,05 m – 1,96 m
Dimensions cockpit	3,20 m x 1,90 m
Passagers recommandés	8/10

\* Déplacement maxi, après, et sans services.

Le charter se réserve le droit de modifier les spécifications et les prix sans préavis. Certains des bateaux qui apparaissent sur ce catalogue sont équipés d'options.



ST BOATS crée le design et construit des bateaux à moteur entre 6 et 12 mètres sur deux lignes, croisière et pêche promenade. Le chantier situé à Vila Nova de Cerveira, à 30 minutes de l'aéroport international de Vigo (Espagne), dispose de 15 000 m<sup>2</sup> d'installations couvertes sur une surface totale de 40 000 m<sup>2</sup>. Avec une production annuelle de 400 unités, il emploie 300 personnes dont 80 sont du personnel technique qualifié.

  
**ST BOATS**

