

Ref : BEDUB562081



Main datas

Builder :
Year : 1991
Length : 13,20
Draft : 2,20
hull : Monohull
Area : France Brittany
Berth details :
Flag : Belgium

Subtype :
Architect : Joubert & nivelt
Material : GRP
Beam : 4,05
keel : Fixed Keel
Life Raft : Yes
Mooring : No
Leasing in progress : No

Engines

Brand : YANMAR
Montage : In Board (IB)
Power Unit. (CV) : 56
Reverse gear, 2 silent blocks, engine from 2003 and always running
Shaft : Shaft drive

Brand : YANMAR
Fuel : Diesel
Comments : YANMAR 56CV engine from 2003, always maintained with care and regularly by its professional owner. Reverse gear, 2 silent blocks, damper, oil cake and rotating stuffing box in 2019. New 80AH alternator.
Shaft : Shaft drive

Facilities

Sailor Cabin : 0	Double Cabin : 4
WC : Sailor	Head : 2
Helm : No	Flybridge : No

Electronics

Radar details :	Radar : No
Sounder details : RAYMARINE ST40	Autopilot : Yes
Plotter details :	GPS : Yes
Watermaker details :	VHF : Yes
	Watermaker : No

Bridge equipment

Hydrolic Gangway : No	Gangway : No
Bath platform : No	Davits : No
Winter cover : No	Electric windlass : Yes
Furling mainsail : No	Furling genoa : Yes
Sail by the glass : 2017	Spring genoa : Yes
Salby dinghy : 2017	Spring genoa : Yes
Teak cockpit : No	Teak deck : No

Major equipment

Stern thruster : No	Bow Thruster : No
Group and thruster details :	Marine Gen. : No
Charger and AC details : Charger DOLPHIN 20AH	AC : No
Tender : Yes	Flaps : No
Details : INMASA 2.20 Dinghy (2018)Mercury 3.3cv	Tender Engine : Yes

Appliances

Freezer : No

Microwaves : No

Oven : Yes

Heating details :

Heater : No

TV : No

TV antenna : No

SAT-TV : No

IceMaker : No

Oven : Yes

Electric stove : No

SAT-TV : No

Divers

Comments : The GIB SEA 442 is a very well built cruising monohull by the GIBERT MARINE shipyard, it is a JOUBERT & NIVELT design that performs at all speeds. This boat is very well followed and maintained by its current owners, in version 4 cabins and 2 toilets and a sail locker, it can accommodate on board between 6 and 10 people. All the woodwork is clean and in good condition, the upholstery is of good quality, the whole boat is in very good general condition. In terms of comfort, the boat has pressurized hot water (2017 cumulus clouds), a 2 burner stove, a refrigerator with 2 separate bins. the L-shaped galley allows it to be used in navigation. The on-board energy is provided by 3 service batteries (April 2021), a new 80AH alternator, a wind turbine, and a battery charger, all of the lighting is LED. For navigation, the sail set is very complete and the on-board electronics are functional with in particular a RAYMARINE SPX30 autopilot, a GARMIN anemometer vane, a COBRA ASN VHF, an AIS transceiver from 2017, a FURUNO GP 32 GPS with the connection allowing the addition of a tablet, and a NAVTEX. The boat is equipped in the offshore category with a survival raft for 6 people (November 2018), an IOR pole and an EPIRB beacon. The 2003 YANMAR engine is a benchmark for robustness and longevity, it is maintained with care and regularly. This boat is ready to take you far according to your sailing schedule, available from September 15, 2021.















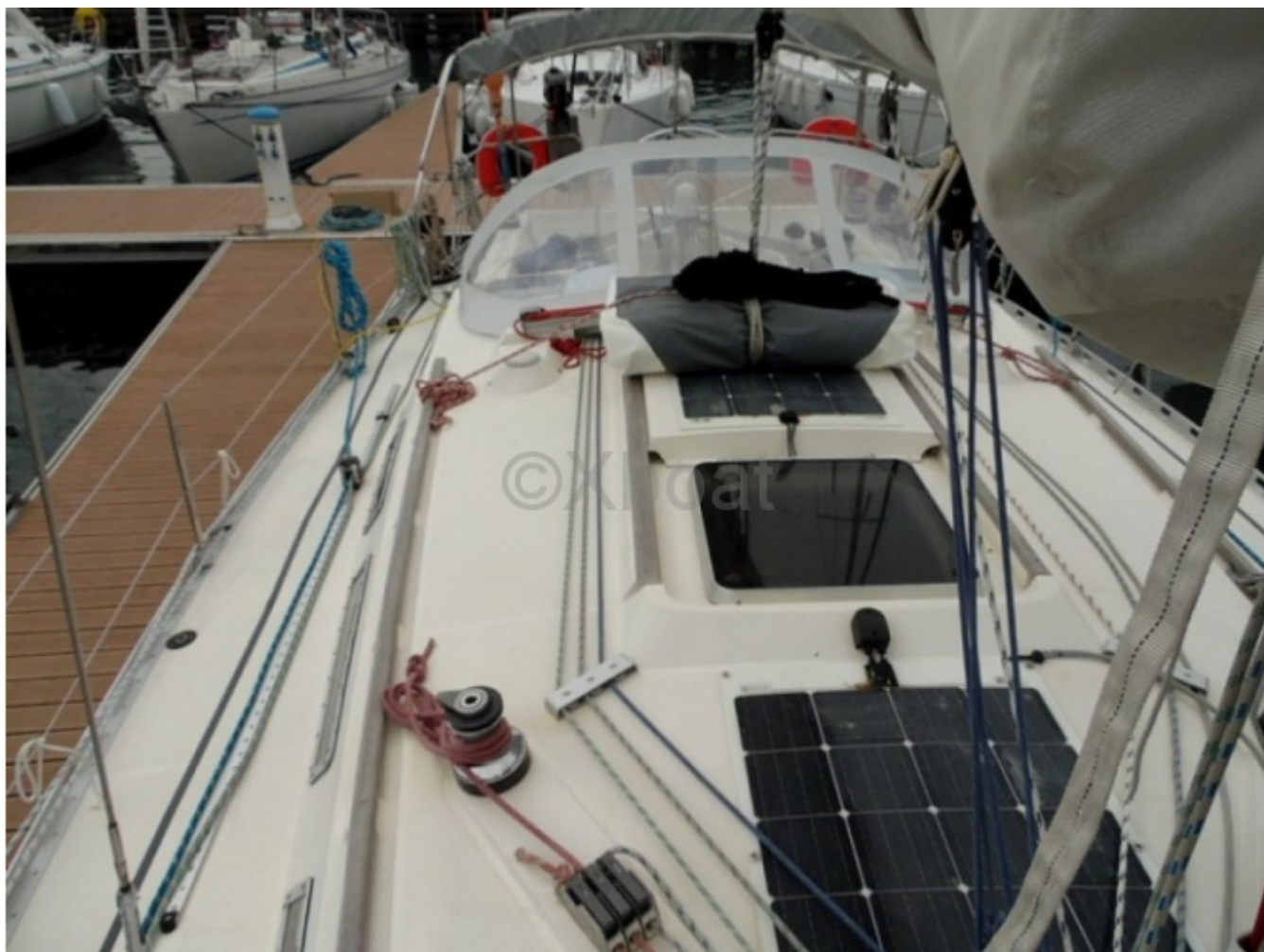






©Xboat





























Gib Sea 442

